



South Kent

ENERGY PARK

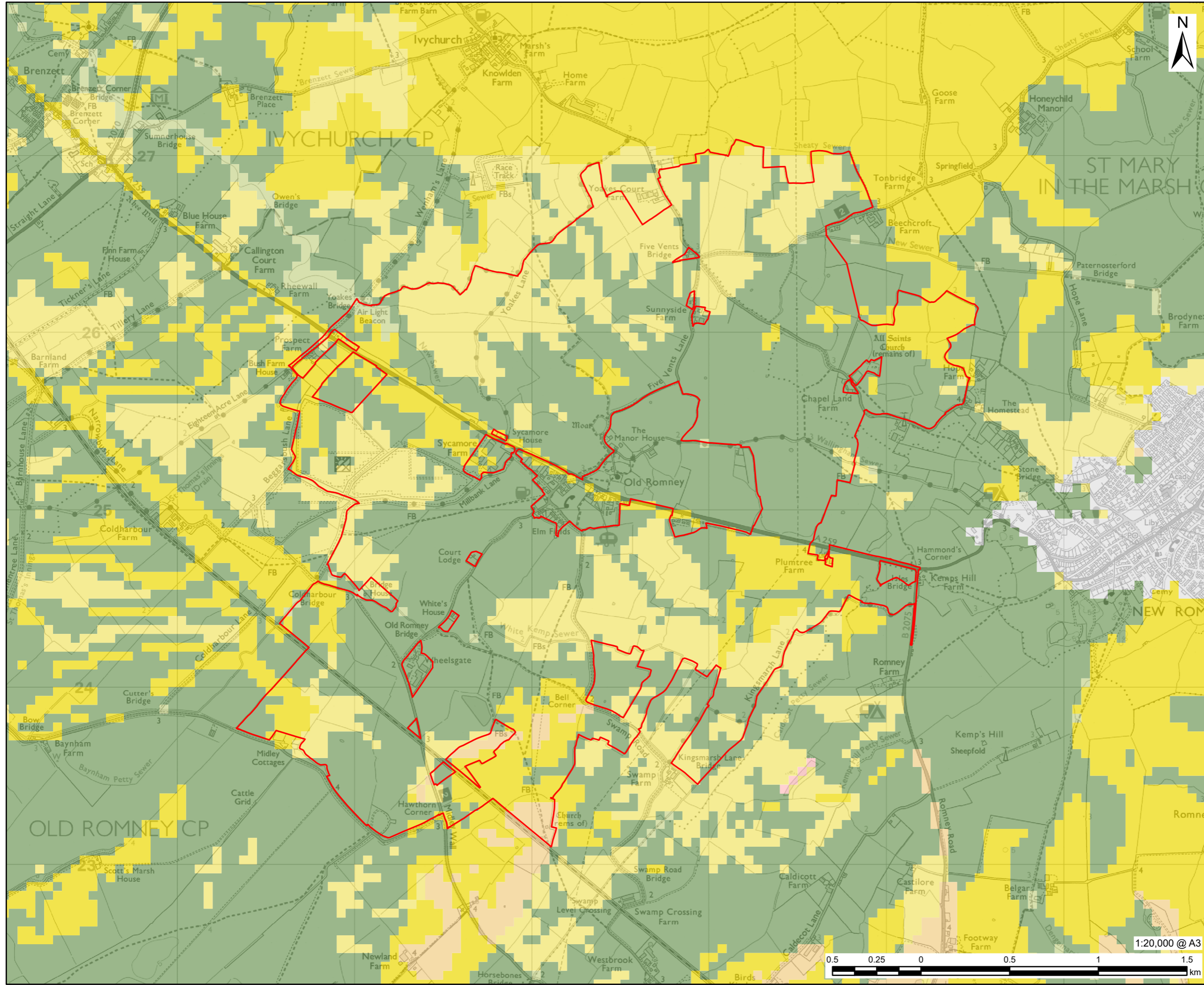
Planning Inspectorate Reference: EN0110035

Environmental Impact Assessment Scoping Report - Figures
June 2026



Table of Contents

PART 1	
Figure 1-1	Proposed Development Location Plan
Figure 2-1	Environmental Constraints
Figure 3-1	DCO Site Boundary and Land Use
Figure 6-1	DCO Solar Projects within 5 km of the Proposed Development
PART 2	
Figure 8-1	Designated Heritage Assets
Figure 8-2	Non-Designated Heritage Assets
PART 3	
Figure 9-1	Sites statutorily designated for their biodiversity value at an International (European) level up to 30 km from the DCO Site Boundary
Figure 9-2	Sites statutorily designated for their biodiversity value at a National or local level within 5 km of the DCO Site Boundary
Figure 9-3	Location of non-statutorily designated sites and priority habitats within 2 km of the DCO Site Boundary
Figure 9-4	Habitats within the DCO Site Boundary
PART 4	
Figure 10-1	Surface Water Features and their Attributes
Figure 10-2	Bedrock Aquifers
Figure 10-3	Groundwater Features and their Attributes
Figure 10-4	Fluvial and Tidal Flood Risk
Figure 10-5	Surface Water Flood Risk
PART 5	
Figure 11-1	Landscape and Visual Study Area
Figure 11-2	Zone of Theoretical Visibility (ZTV) DCO Site Boundary, North – Bare Earth
Figure 11-3	ZTV DCO Site Boundary, South – Bare Earth
Figure 12-1	Noise and Vibration Study Areas and Noise Monitoring Locations
Figure 13-1	Study Area for Socio-Economic Impacts
PART 6	
Figure 14-1	Predictive Agricultural Land Classification (ALC)
Figure 14-2	Soil Associations
Figure 15-1	Transport and Access Study Area
Figure 15-2	Existing Walking and Cycling Network
Figure 15-3	Bus Stops and Routes
Figure 15-4	Railway Stations
Figure 15-5	Traffic Survey Locations
Figure 17-1	Air Quality Study Area for South Kent Energy Park
Figure 17-2	Ground Conditions Study Area Boundaries



AECOM Limited
3 Rivergate
Bristol, BS1 6EW
www.aecom.com

- DCO Site Boundary
- Predictive Agricultural Land Classification Grade:
- Grade 1
- Grade 2
- Grade 3a
- Grade 3b
- Grade 4
- Non Agricultural
- Urban

© Crown copyright and database rights 2025
Ordnance Survey AC0000808122.
© Department for Environment, Food & Rural
Affairs copyright and/or database right 2024.
All rights reserved.

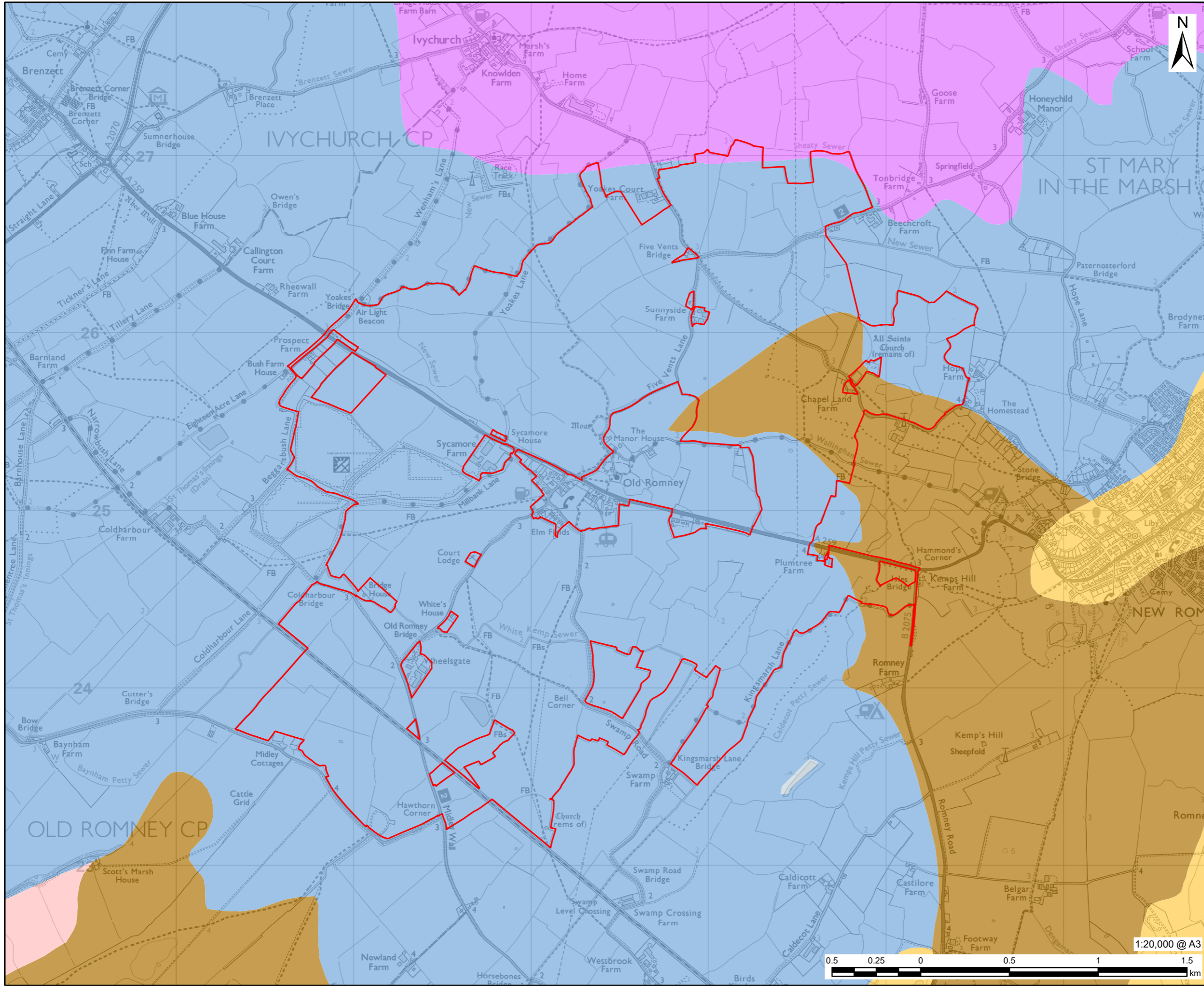
Scoping Report

60716220

Predictive Agricultural Land
Classification (ALC)

Figure 14-1

This drawing has been prepared for the use of AECOM's client. It may not be used, modified, reproduced or relied upon by third parties, except as agreed by AECOM or as required by law. AECOM accepts no responsibility, and denies any liability whatsoever, to any party that uses or relies on this drawing without AECOM's express written consent. Do not scale this document. All measurements must be obtained from the stated dimensions.



PROJECT



CLIENT



CONSULTANT

AECOM Limited
3 Rivergate
Bristol, BS1 6EW
www.aecom.com

LEGEND

- DCO Site Boundary
- NATMAP Soil Association Name:
- 361 - Sandwich
- 532b - Romney
- 813g - Wallasea 2
- 814b - Newchurch 1
- 814c - Newchurch 2
- Lake

NOTES

© Crown copyright and database rights 2025
Ordnance Survey AC0000808122.
Data originated from the Cranfield University,
Land Information System LandIS® Portal
(NATMAP) as Public Data 2026, subject to
the Open Licence.

ISSUE PURPOSE

Scoping Report

PROJECT NUMBER

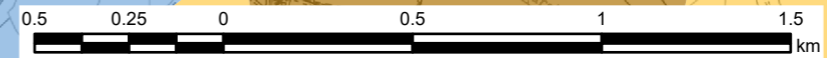
60716220

FIGURE TITLE

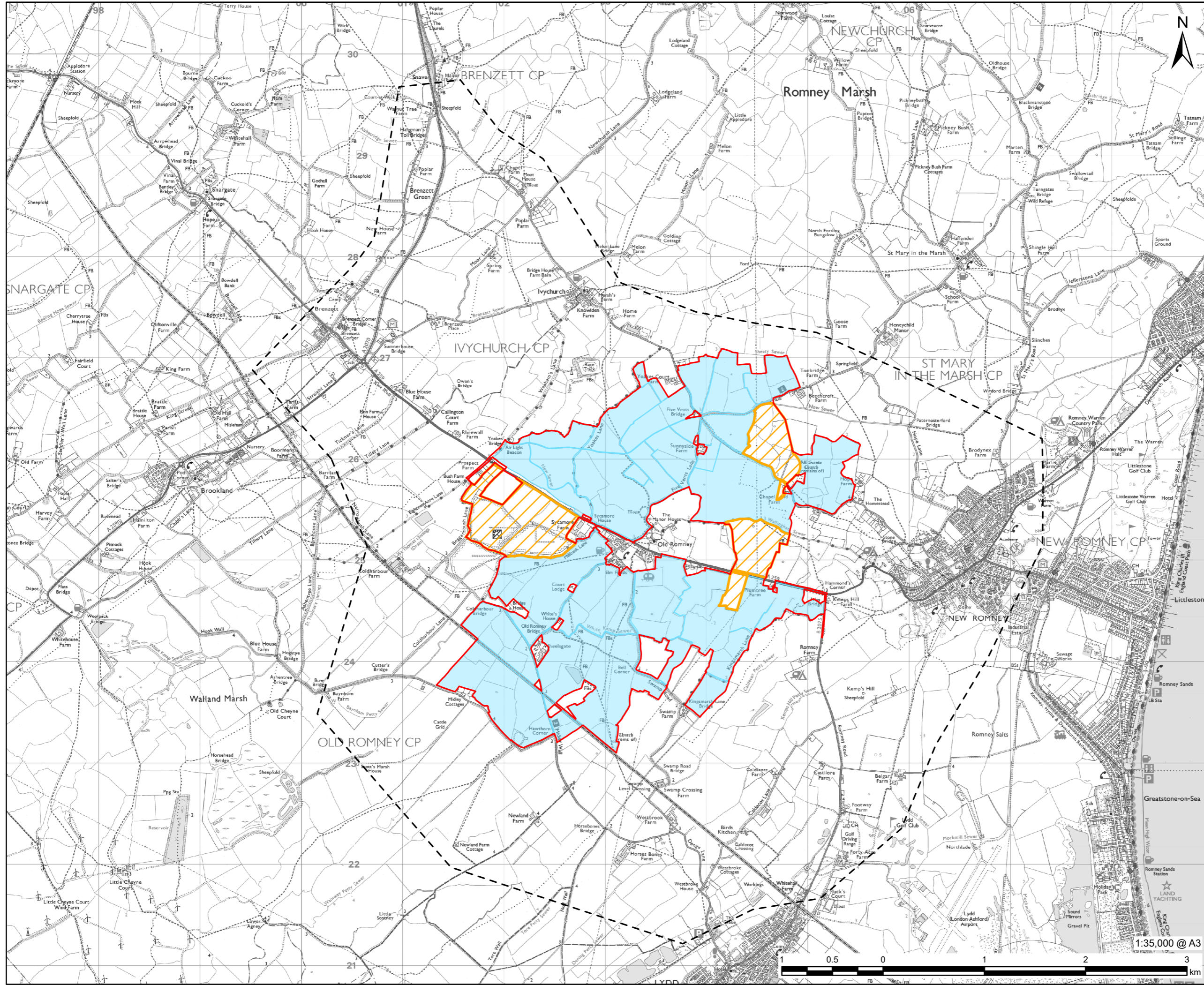
Soil Associations

FIGURE NUMBER

Figure 14-2



This drawing has been prepared for the use of AECOM's client. It may not be used, modified, reproduced or relied upon by third parties, except as agreed by AECOM or as required by law. AECOM accepts no responsibility, and denies any liability whatsoever, to any party that uses or relies on this drawing without AECOM's express written consent. Do not scale this document. All measurements must be obtained from the stated dimensions.



PROJECT



CONSULTANT

AECOM Limited
3 Rivergate
Bristol, BS1 6EW
www.aecom.com

LEGEND

- DCO Site Boundary
- Main Site
- Interconnecting Areas
- Transport Study Area

NOTES

© Crown copyright and database rights 2025
Ordnance Survey AC0000808122.

ISSUE PURPOSE

Scoping Report

PROJECT NUMBER

60716220

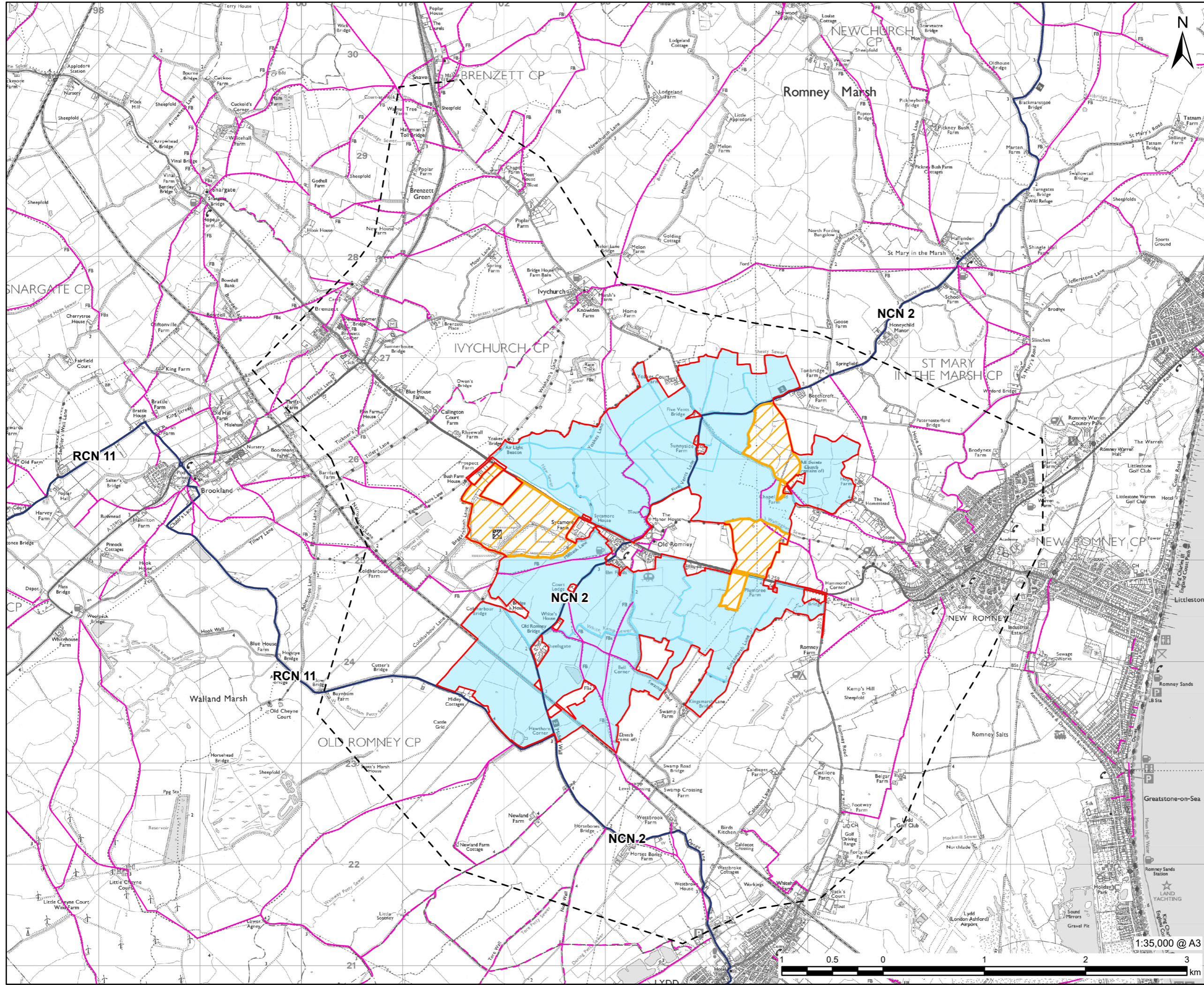
FIGURE TITLE

Transport and Access Study Area

FIGURE NUMBER

Figure 15-1

This drawing has been prepared for the use of AECOM's client. It may not be used, modified, reproduced or relied upon by third parties, except as agreed by AECOM or as required by law. AECOM accepts no responsibility, and denies any liability whatsoever, to any party that uses or relies on this drawing without AECOM's express written consent. Do not scale this document. All measurements must be obtained from the stated dimensions.



PROJECT



CONSULTANT

AECOM Limited
3 Rivergate
Bristol, BS1 6EW
www.aecom.com

LEGEND

- DCO Site Boundary
- Main Site
- Interconnecting Areas
- Transport Study Area
- Public Right of Way:
- Footpath
- Bridleway
- National Cycle Network:
- TrafficFree
- OnRoad

NOTES

© Crown copyright and database rights 2025
 Ordnance Survey AC0000808122.
 Contains data supplied by © Kent County Council (2024), © East Sussex County Council (2024).
 Sustrans National Cycle Network data contains Ordnance Survey data (© Crown copyright and database rights (2018)). The dataset contains © OpenStreetMap contributions in Northern Ireland which is available under the Open Data Commons Open Database License (ODbL).

ISSUE PURPOSE

Scoping Report

PROJECT NUMBER

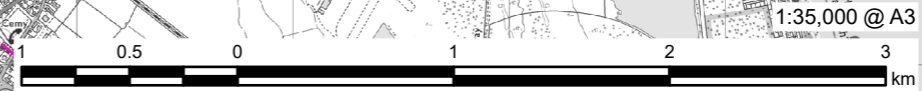
60716220

FIGURE TITLE

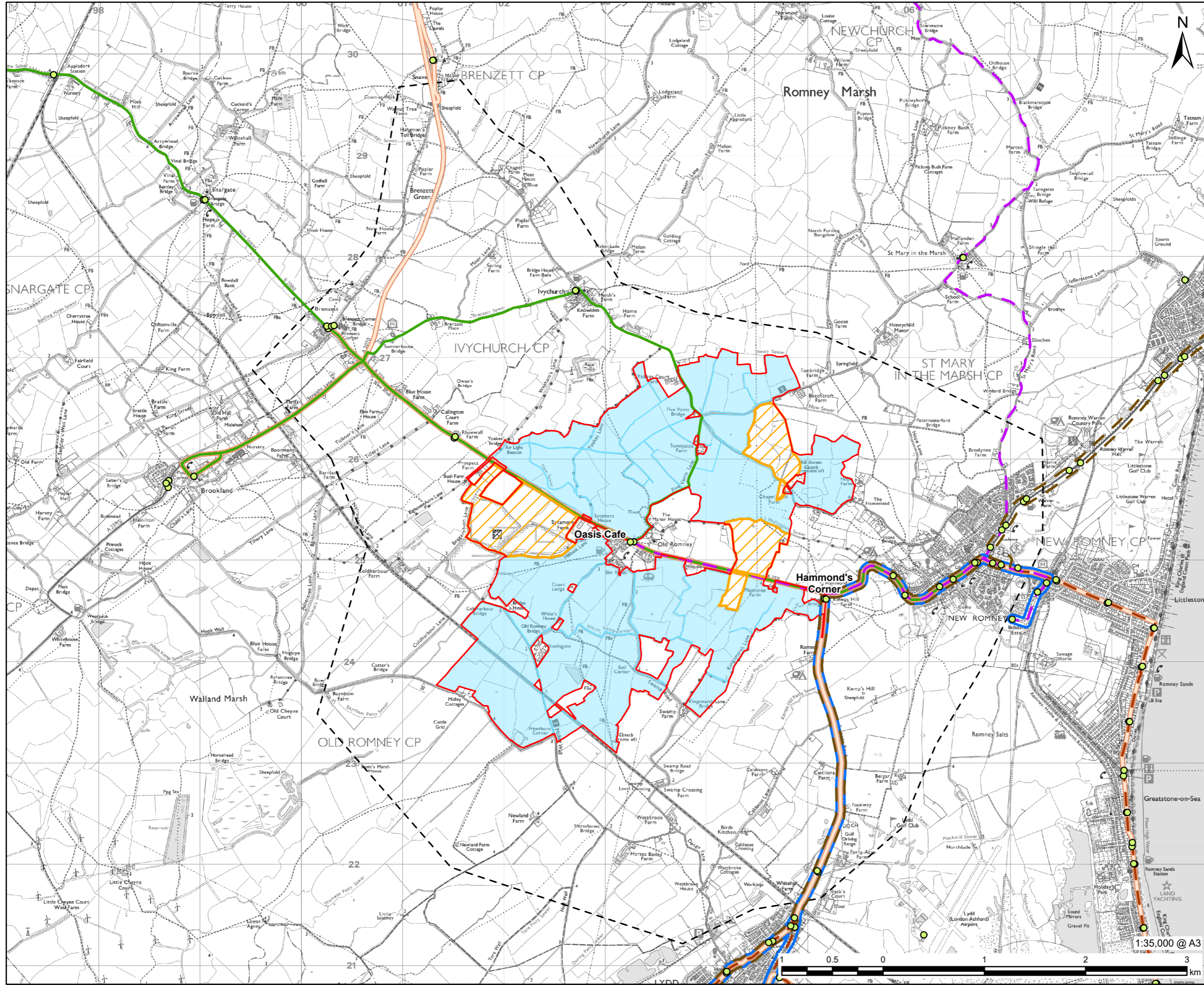
Existing Walking and Cycling Network

FIGURE NUMBER

Figure 15-2



This drawing has been prepared for the use of AECOM's client. It may not be used, modified, reproduced or relied upon by third parties, except as agreed by AECOM or as required by law. AECOM accepts no responsibility, and denies any liability whatsoever, to any party that uses or relies on this drawing without AECOM's express written consent. Do not scale this document. All measurements must be obtained from the stated dimensions.



PROJECT



CONSULTANT

AECOM Limited
3 Rivergate
Bristol, BS1 6EW
www.aecom.com

LEGEND

- DCO Site Boundary
 - Main Site
 - Interconnecting Areas
 - Transport Study Area
 - Bus Stop
- Bus Route:
- Route 511
 - Route 511a
 - Route 511b
 - Route 533
 - Route 102
 - Route 100

NOTES

© Crown copyright and database rights 2025
Ordnance Survey AC0000808122.
© OpenStreetMap. Open Database 1.0
License, www.openstreetmap.org/copyright.
Contains public sector information licensed
under the Open Government Licence v3.0.
Bus Route data digitised from bustimes.org
under the Open Government Licence v3.0.

ISSUE PURPOSE

Scoping Report

PROJECT NUMBER

60716220

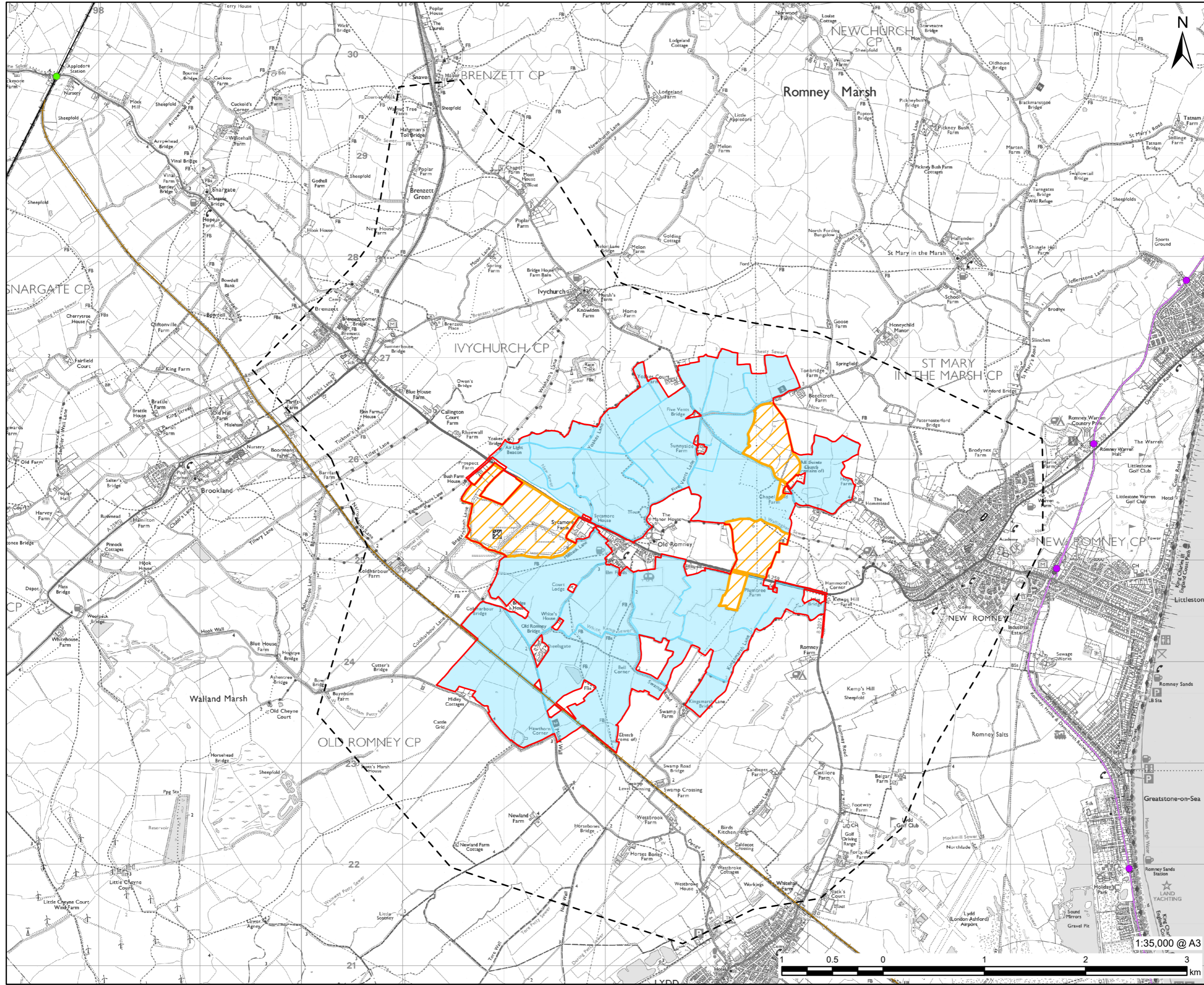
FIGURE TITLE

Bus Stops and Routes

FIGURE NUMBER

Figure 15-3

This drawing has been prepared for the use of AECOM's client. It may not be used, modified, reproduced or relied upon by third parties, except as agreed by AECOM or as required by law. AECOM accepts no responsibility, and denies any liability whatsoever, to any party that uses or relies on this drawing without AECOM's express written consent. Do not scale this document. All measurements must be obtained from the stated dimensions.



PROJECT



CONSULTANT

AECOM Limited
3 Rivergate
Bristol, BS1 6EW
www.aecom.com

LEGEND

- DCO Site Boundary
- Main Site
- Interconnecting Areas
- Transport Study Area
- Public Railway Station
- Model Railway Station
- Public Railway Track
- Model Railway Track
- Freight Only Railway Track

NOTES

© Crown copyright and database rights 2025
Ordnance Survey AC0000808122.
Contains OS data © Crown copyright and
database right 2025.

ISSUE PURPOSE

Scoping Report

PROJECT NUMBER

60716220

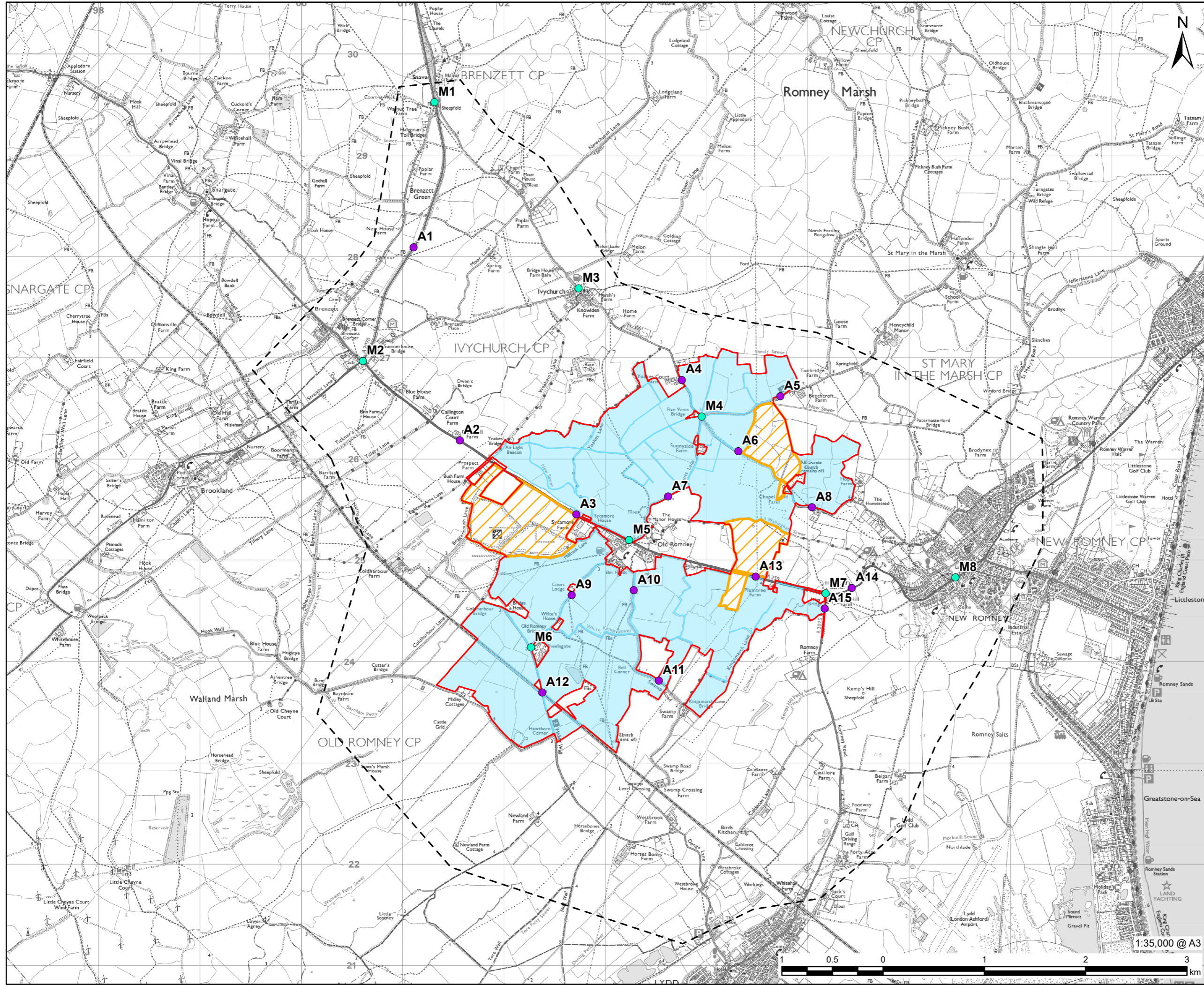
FIGURE TITLE

Railway Stations

FIGURE NUMBER

Figure 15-4

This drawing has been prepared for the use of AECOM's client. It may not be used, modified, reproduced or relied upon by third parties, except as agreed by AECOM or as required by law. AECOM accepts no responsibility, and denies any liability whatsoever, to any party that uses or relies on this drawing without AECOM's express written consent. Do not scale this document. All measurements must be obtained from the stated dimensions.



PROJECT



CLIENT



CONSULTANT

AECOM Limited
3 Rivergate
Bristol, BS1 6EW
www.aecom.com

LEGEND

- DCO Site Boundary
- Main Site
- Interconnecting Areas
- Transport Study Area
- Traffic Survey Location:
 - Automatic Traffic Count (ATC)
 - Manual Classified Count (MCC)

NOTES

© Crown copyright and database rights 2025
Ordnance Survey AC0000808122.

ISSUE PURPOSE

Scoping Report

PROJECT NUMBER

60716220

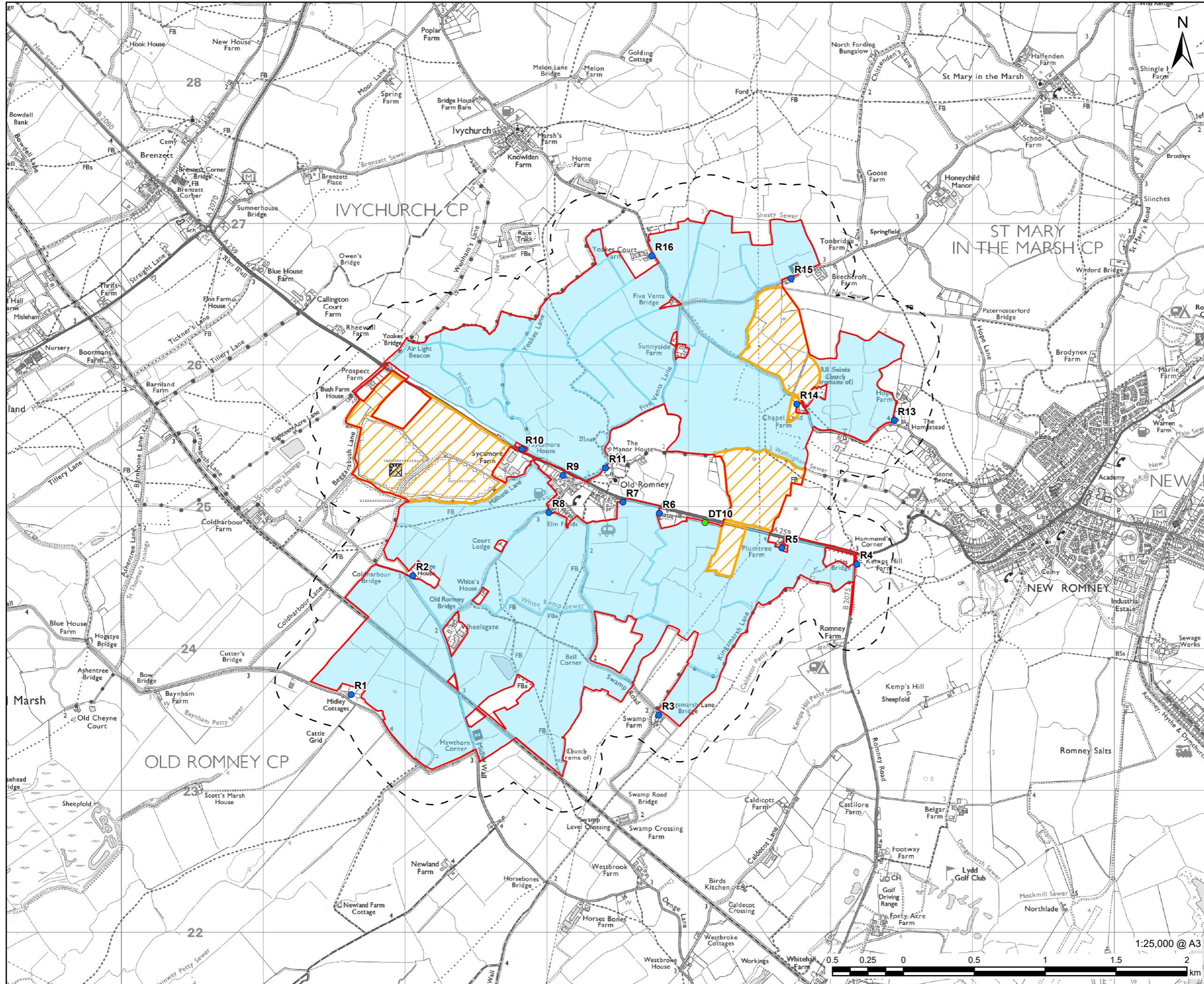
FIGURE TITLE

Traffic Survey Locations

FIGURE NUMBER

Figure 15-5

This drawing has been prepared for the use of AECOM's client. It may not be used, modified, reproduced or relied upon by third parties, except as agreed by AECOM or as required by law. AECOM accepts no responsibility, and denies any liability whatsoever, to any party that uses or relies on this drawing without AECOM's express written consent. Do not scale this document. All measurements must be obtained from the stated dimensions.



PROJECT



CLIENT

low carbon

powering tomorrow



CONSULTANT

AECOM Limited
3 Rivergate
Bristol, BS1 6EW
www.aecom.com

LEGEND

- DCO Site Boundary
- Main Site
- Interconnecting Areas
- Air Quality Receptors
- Local Air Quality Monitoring

NOTES

© Crown copyright and database rights 2025
Ordnance Survey AC0000808122.
Folkestone and Hythe District Council (2025).
Air Quality Annual Status Report.

ISSUE PURPOSE

Scoping Report

PROJECT NUMBER

60716220

FIGURE TITLE

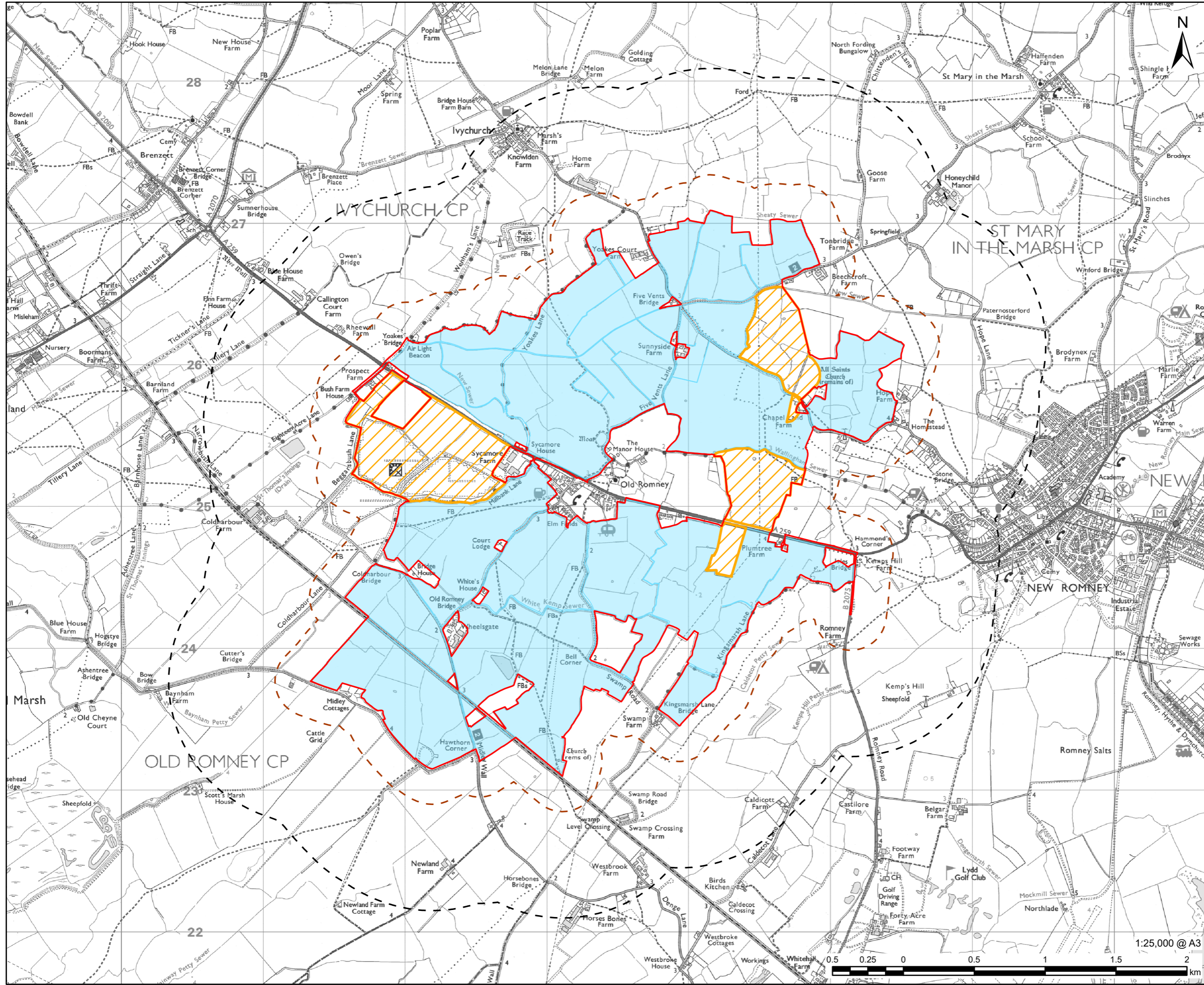
Air Quality Study Area for South Kent
Energy Park

FIGURE NUMBER

Figure 17-1



This drawing has been prepared for the use of AECOM's client. It may not be used, modified, reproduced or relied upon by third parties, except as agreed by AECOM or as required by law. AECOM accepts no responsibility, and denies any liability whatsoever, to any party that uses or relies on this drawing without AECOM's express written consent. Do not scale this document. All measurements must be obtained from the stated dimensions.



PROJECT



CONSULTANT

AECOM Limited
3 Rivergate
Bristol, BS1 6EW
www.aecom.com

LEGEND

- DCO Site Boundary
- Main Site
- Interconnecting Areas
- 250m Study Area for Geology and Land Contamination
- 1km Study Area for Hydrogeology

NOTES

© Crown copyright and database rights 2025
Ordnance Survey AC0000808122.

ISSUE PURPOSE

Scoping Report

PROJECT NUMBER

60716220

FIGURE TITLE

Ground Conditions Study Area
Boundaries

FIGURE NUMBER

Figure 17-2

This drawing has been prepared for the use of AECOM's client. It may not be used, modified, reproduced or relied upon by third parties, except as agreed by AECOM or as required by law. AECOM accepts no responsibility, and denies any liability whatsoever, to any party that uses or relies on this drawing without AECOM's express written consent. Do not scale this document. All measurements must be obtained from the stated dimensions.